

KEDIA ADVISORY



# DAILY BULLION REPORT

30 Jan 2024

- BULLDEX
- GOLD
- SILVER



Kedia Stocks & Commodities Research Pvt. Ltd.

Research Advisory | White Labelling | Digital Marketing



## BULDEX SNAPSHOT

Commodity	Expiry	Open	High	Low	Close	% Change
MCXBULLDEX	23-Feb-24	16107.00	16175.00	16085.00	16161.00	0.61
MCXBULLDEX	26-Mar-24	0.00	0.00	0.00	16286.00	0.46

## BULLION SNAPSHOT

Commodity	Expiry	Open	High	Low	Close	% Change
GOLD	5-Apr-24	62263.00	62549.00	62180.00	62367.00	0.42
GOLD	5-Jun-24	62656.00	62910.00	62575.00	62737.00	0.45
GOLDMINI	5-Mar-24	62050.00	62310.00	61947.00	62101.00	0.20
GOLDMINI	5-Apr-24	62021.00	62548.00	62021.00	62374.00	0.36
SILVER	5-Mar-24	71854.00	72550.00	71704.00	72377.00	0.84
SILVER	3-May-24	73100.00	73686.00	72900.00	73521.00	0.82
SILVERMINI	29-Feb-24	72020.00	72570.00	71779.00	72413.00	-6.78
SILVERMINI	30-Apr-24	73149.00	73691.00	72950.00	73551.00	1.39

## OPEN INTEREST SNAPSHOT

Commodity	Expiry	% Change	% Oi Change	Oi Status
MCXBULLDEX	23-Feb-24	0.61	-4.98	Short Covering
MCXBULLDEX	26-Mar-24	0.46	0.00	Short Covering
GOLD	5-Apr-24	0.42	11.05	Fresh Buying
GOLD	5-Jun-24	0.45	100.00	Fresh Buying
GOLDMINI	5-Mar-24	0.20	29.32	Fresh Buying
GOLDMINI	5-Apr-24	0.36	24.38	Fresh Buying
SILVER	5-Mar-24	0.84	-12.09	Short Covering
SILVER	3-May-24	0.82	-2.13	Short Covering
SILVERMINI	29-Feb-24	0.79	-6.78	Short Covering
SILVERMINI	30-Apr-24	0.76	1.39	Fresh Buying

## INTERNATIONAL BULLION SNAPSHOT

Commodity	Open	High	Low	Close	% Change
Gold \$	2021.92	2037.44	2019.36	2031.18	0.54
Silver \$	22.81	23.23	22.76	23.18	1.06

## RATIOS

Ratio	Price	Ratio	Price	Ratio	Price
Gold / Silver Ratio	86.17	Silver / Crudeoil Ratio	11.31	Gold / Copper Ratio	85.21
Gold / Crudeoil Ratio	9.75	Silver / Copper Ratio	98.88	Crudeoil / Copper Ratio	8.74

## Important levels for Jewellery/Bullion Dealers



Booking Price for Sellers	Booking Price for Buyers
62677.00	62057.00
62887.00	61847.00



Booking Price for Sellers	Booking Price for Buyers
73097.00	71657.00
73857.00	70897.00



Booking Price for Sellers	Booking Price for Buyers
83.31	82.95
83.53	82.73

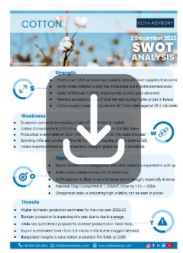


Booking Price for Sellers	Booking Price for Buyers
2045.70	2020.40
2058.60	2007.50



Booking Price for Sellers	Booking Price for Buyers
23.56	22.74
23.87	22.43

Click here for download Kedia Advisory **Special Research** Reports



**Technical Snapshot**



**BUY GOLD APR @ 62200 SL 62000 TGT 62500-62700. MCX**

**Observations**

Gold trading range for the day is 61995-62735.

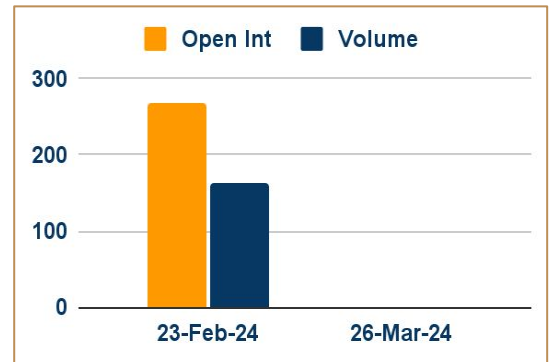
Gold price delivers strong upside move as geopolitical tensions deepen.

Monthly core PCE grew by 0.2% as expected while annual underlying inflation data decelerated to 2.9% against expectations of 3.0%

Fed policy, labor market and Manufacturing PMI data for December will remain in the spotlight.

The Fed is expected to keep interest rates unchanged for the fourth straight time.

**OI & Volume**



**Spread**

GOLD JUN-APR	370.00
GOLDMINI APR-MAR	273.00

**Trading Levels**

Commodity	Expiry	Close	R2	R1	PP	S1	S2
GOLD	5-Apr-24	62367.00	62735.00	62550.00	62365.00	62180.00	61995.00
GOLD	5-Jun-24	62737.00	63075.00	62905.00	62740.00	62570.00	62405.00
GOLDMINI	5-Mar-24	62101.00	62485.00	62295.00	62120.00	61930.00	61755.00
GOLDMINI	5-Apr-24	62374.00	62845.00	62610.00	62315.00	62080.00	61785.00
Gold \$		2031.18	2047.08	2038.64	2029.00	2020.56	2010.92

Technical Snapshot



**BUY SILVER MAR @ 71800 SL 71200 TGT 72600-73200. MCX**

Observations

Silver trading range for the day is 71365-73055.

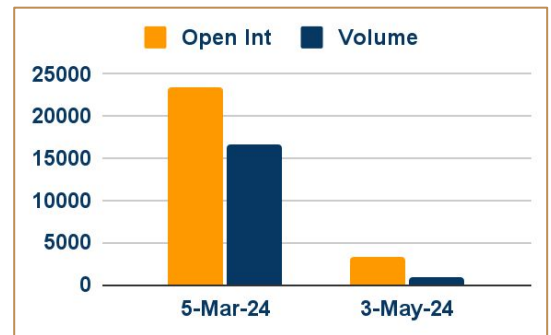
Silver gains as geopolitical tensions in the Middle East deteriorate.

Prices are boosted by the current decline in US 10-year treasury yields ahead of Fed policy meeting

The US economy grew strongly by 3.3% while investors projected GDP expansion by 2%.

US economic resilience would continue to strengthen the appeal for restrictive interest rates

OI & Volume



Spread

SILVER MAY-MAR	1144.00
SILVERMINI APR-FEB	1138.00

Trading Levels

Commodity	Expiry	Close	R2	R1	PP	S1	S2
SILVER	5-Mar-24	72377.00	73055.00	72715.00	72210.00	71870.00	71365.00
SILVER	3-May-24	73521.00	74155.00	73840.00	73370.00	73055.00	72585.00
SILVERMINI	29-Feb-24	72413.00	73045.00	72730.00	72255.00	71940.00	71465.00
SILVERMINI	30-Apr-24	73551.00	74135.00	73840.00	73395.00	73100.00	72655.00
Silver \$		23.18	23.53	23.36	23.06	22.89	22.59

Gold price remains upbeat as mounting geopolitical tensions have improved the appeal of bullion. The precious metal attracts significant bids as the drone attack on US bases near north-eastern Jordan has impacted market sentiment. In addition, a moderate increase in the U S Core Personal Consumption Expenditures (PCE) data for December has softened the inflation outlook.

Stimulus, New Year cheer ignites China demand, India awaits budget - China's physical gold premiums climbed as additional stimulus measures aided sentiment days before Lunar New Year celebrations begin in the top buyer, while Indian retail consumers and jewellers showed limited interest ahead of a federal budget. Premiums surged, suggesting investors are anticipating further market rescue measures and potential buying sprees ahead of the upcoming Lunar New Year. Chinese dealers quoted premiums of \$46-\$57 per ounce over spot prices, up from last week's \$42-\$54.2 range. In India, dealers were offering a discount of up to \$9 an ounce over official domestic prices, unchanged from last week as buyers remained on sidelines ahead of the budget to be presented on Feb. 1. India's commerce ministry has backed a long-standing demand from the jewellery industry to reduce import tariffs on gold bars, government and industry officials said. In Japan, dealers sold gold at par to \$1 premiums.

China's December net gold imports via Hong Kong jump 37% m/m - China's net gold imports via Hong Kong jumped about 37% in December from the previous month, Hong Kong Census and Statistics Department data showed. Net imports into the world's top gold consumer stood at 50.381 metric tons in December, compared with 36.801 tons in November, the data showed. Total gold imports via Hong Kong were up 29% at 59.589 tons.

Swiss gold exports up in August due to higher shipments to India - Swiss gold exports rose by 7.3% in August from July as higher deliveries to India and China offset lower supplies to Turkey, customs data showed. Switzerland is the world's biggest bullion refining and transit hub, while China and India are the largest consumer markets with local demand sensitive to high prices and time of the season. Supplies to India, where jewellers usually make purchases for the October-November festival season, jumped by almost threefold to their highest since May, while shipments to China rose 1%, the data showed. China's physical gold premiums soared to a new high last week, amid strong demand to shore up a depreciating yuan and a lack of fresh import quotas.





Date	Curr.	Data
Jan 30	EUR	German Prelim GDP q/q
Jan 30	USD	CB Consumer Confidence
Jan 30	USD	JOLTS Job Openings
Jan 30	EUR	German Nagel Speaks
Jan 31	EUR	German Unemployment Change
Jan 31	USD	ADP Non-Farm Change
Jan 31	USD	Employment Cost Index q/q
Jan 31	USD	Chicago PMI
Jan 31	USD	Crude Oil Inventories
Feb 1	USD	Federal Funds Rate
Feb 1	EUR	Spanish Manufacturing PMI
Feb 1	EUR	German Final Manufacturing PMI
Feb 1	EUR	Final Manufacturing PMI

Date	Curr.	Data
Feb 1	EUR	Unemployment Rate
Feb 1	USD	Unemployment Claims
Feb 1	USD	Prelim Nonfarm Productivity q/q
Feb 1	USD	Prelim Unit Labor Costs q/q
Feb 1	USD	Final Manufacturing PMI
Feb 1	USD	ISM Manufacturing PMI
Feb 1	USD	ISM Manufacturing Prices
Feb 1	USD	Construction Spending m/m
Feb 1	USD	Natural Gas Storage
Feb 2	USD	Average Hourly Earnings m/m
Feb 2	USD	Non-Farm Employment Change
Feb 2	USD	Unemployment Rate
Feb 2	USD	Revised UoM Consumer Sentiment





## DISCLAIMER

KEDIA ADVISORY

This Report is prepared and distributed by Kedia Stocks & Commodities Research Pvt Ltd. Our SEBI REGISTRATION NUMBER - INH000006156. for information purposes only. The recommendations, if any, made herein are expressions of views and/or opinions and should not be deemed or construed to be neither advice for the purpose of purchase or sale through KSCRPL nor any solicitation or offering of any investment /trading opportunity. These information/opinions/ views are not meant to serve as a professional investment guide for the readers. No action is solicited based upon the information provided herein. Recipients of this Report should rely on information/data arising out of their own investigations. Readers are advised to seek independent professional advice and arrive at an informed trading/investment decision before executing any trades or making any investments. This Report has been prepared on the basis of publicly available information, internally developed data and other sources believed by KSCRPL to be reliable. KSCRPL or its directors, employees, affiliates or representatives do not assume any responsibility for or warrant the accuracy, completeness, adequacy and reliability of such information/opinions/ views. While due care has been taken to ensure that the disclosures and opinions given are fair and reasonable, none of the directors, employees, affiliates or representatives of KSCRPL shall be liable for any direct, indirect, special, incidental, consequential, punitive or exemplary damages, including lost profits arising in any way whatsoever from the information/opinions/views contained in this Report. The possession, circulation and/or distribution of this Report may be restricted or regulated in certain jurisdictions by appropriate laws. No action has been or will be taken by KSCRPL in any jurisdiction (other than India), where any action for such purpose (s) is required. Accordingly, this Report shall not be possessed, circulated and/ or distributed in any such country or jurisdiction unless such action is in compliance with all applicable laws and regulations of such country or jurisdiction. KSCRPL requires such a recipient to inform himself about and to observe any restrictions at his own expense, without any liability to KSCRPL. Any dispute arising out of this Report shall be subject to the exclusive jurisdiction of the Courts in India.

**KEDIA ADVISORY**

**KEDIA STOCKS & COMMODITIES RESEARCH PVT LTD**

Mumbai, India

SEBI REGISTRATION NUMBER - INH000006156

For more details, please contact: +91 93234 06035 / 96195 51022

Email: [info@kediaadvisory.com](mailto:info@kediaadvisory.com)

Regd.Off.: 1, 2, 3 & 4, 1st Floor, Tulip Bldg, Flower Valley Complex, Khadakpada Circle,  
Kalyan-(W), Mumbai-421301